

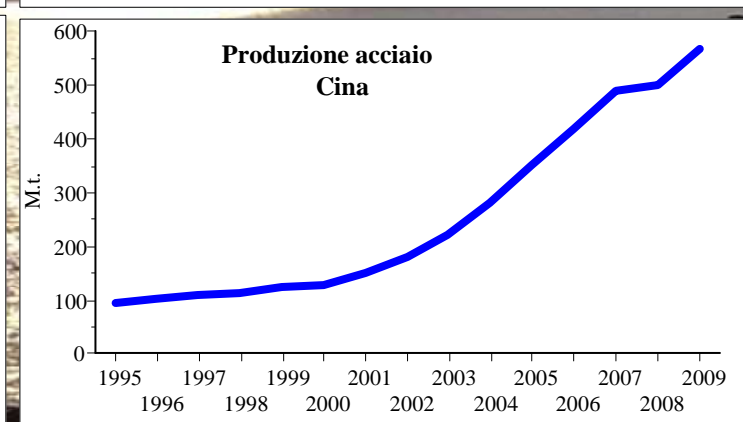
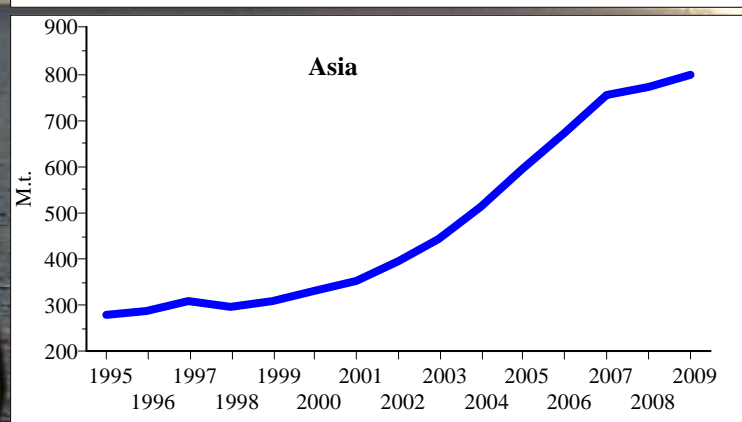
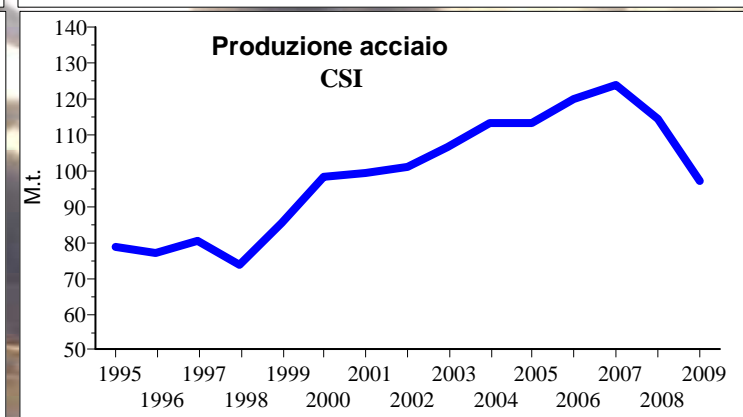
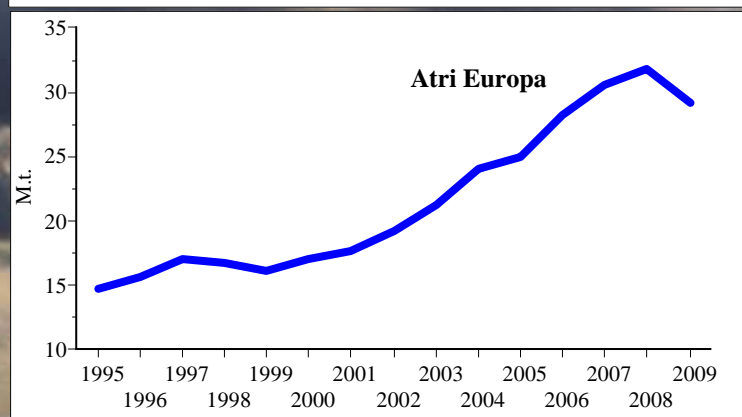
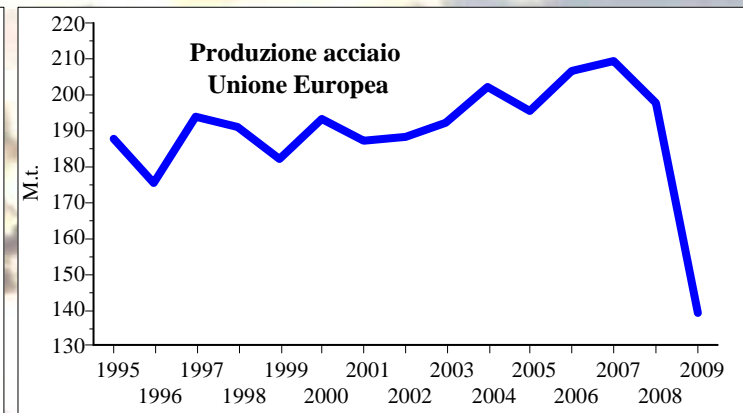
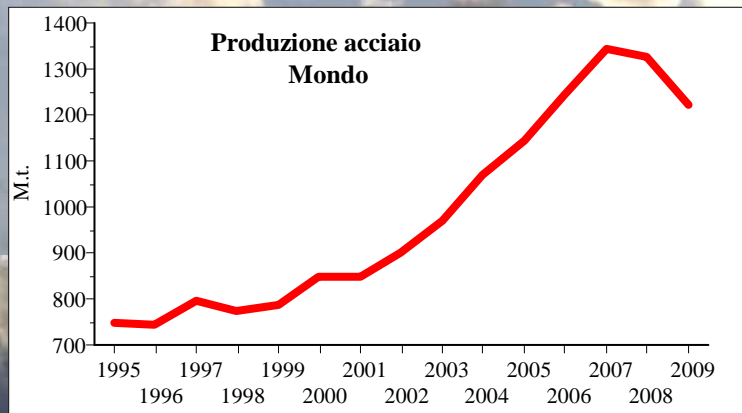
Osservatorio Congiunturale

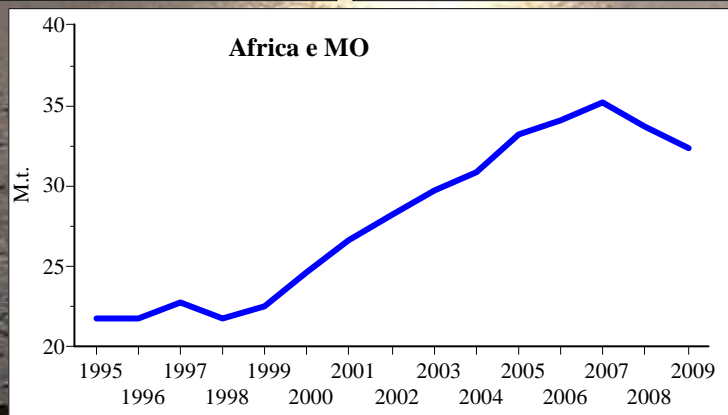
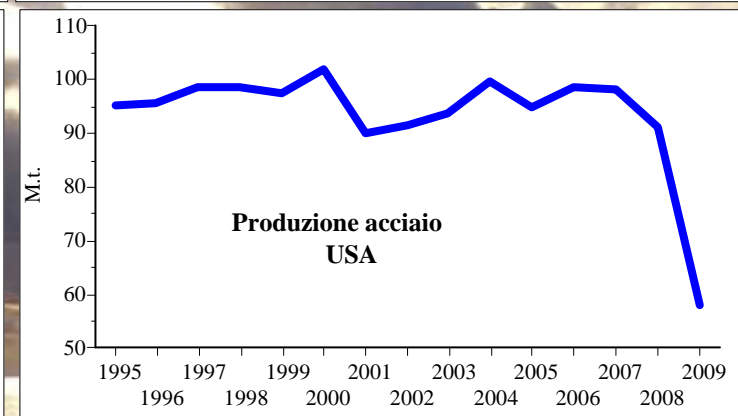
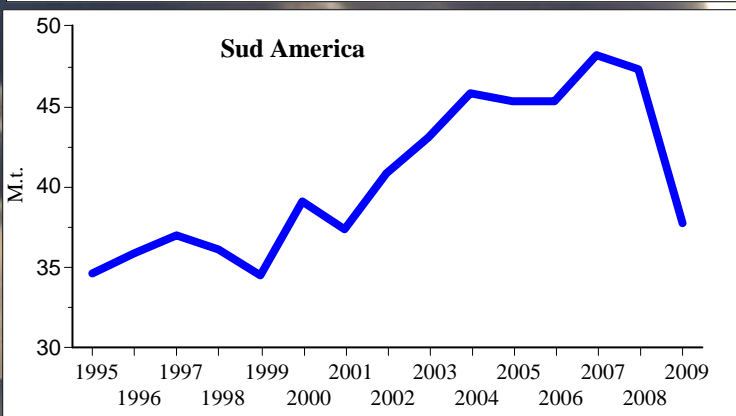
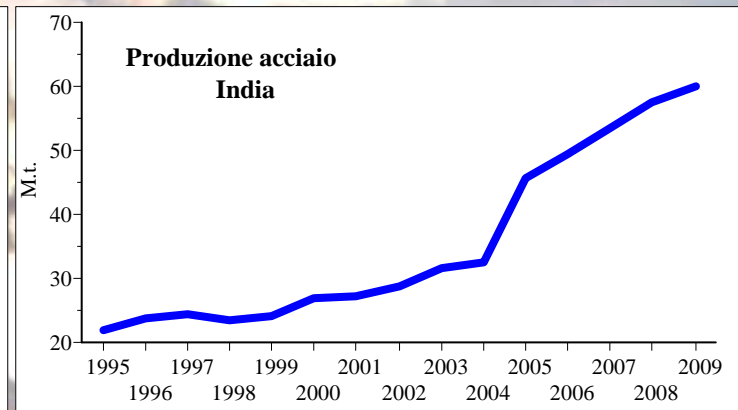
# Siderurgia

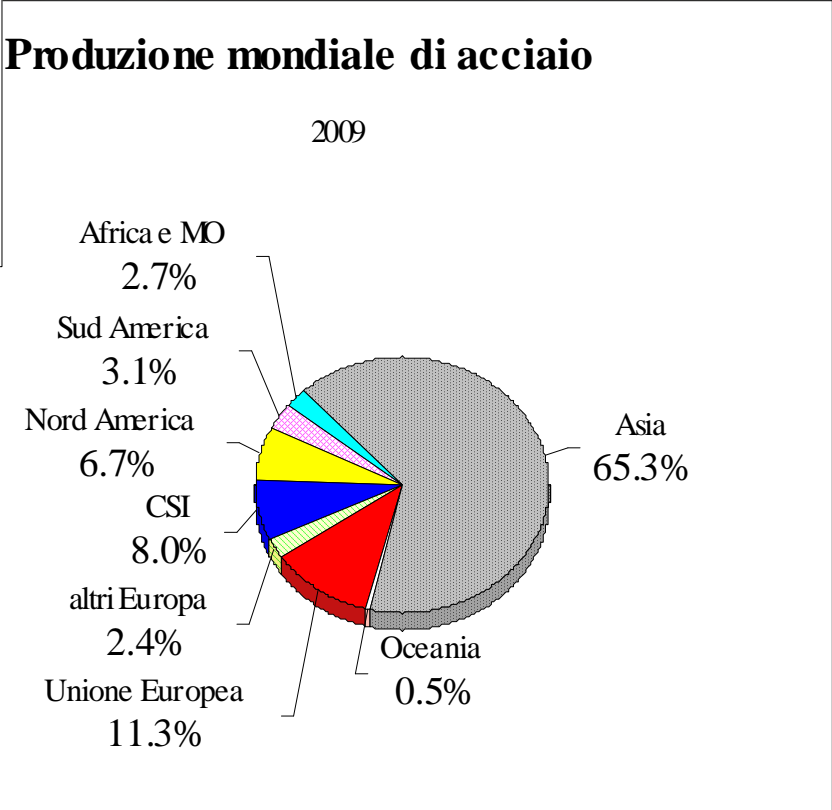
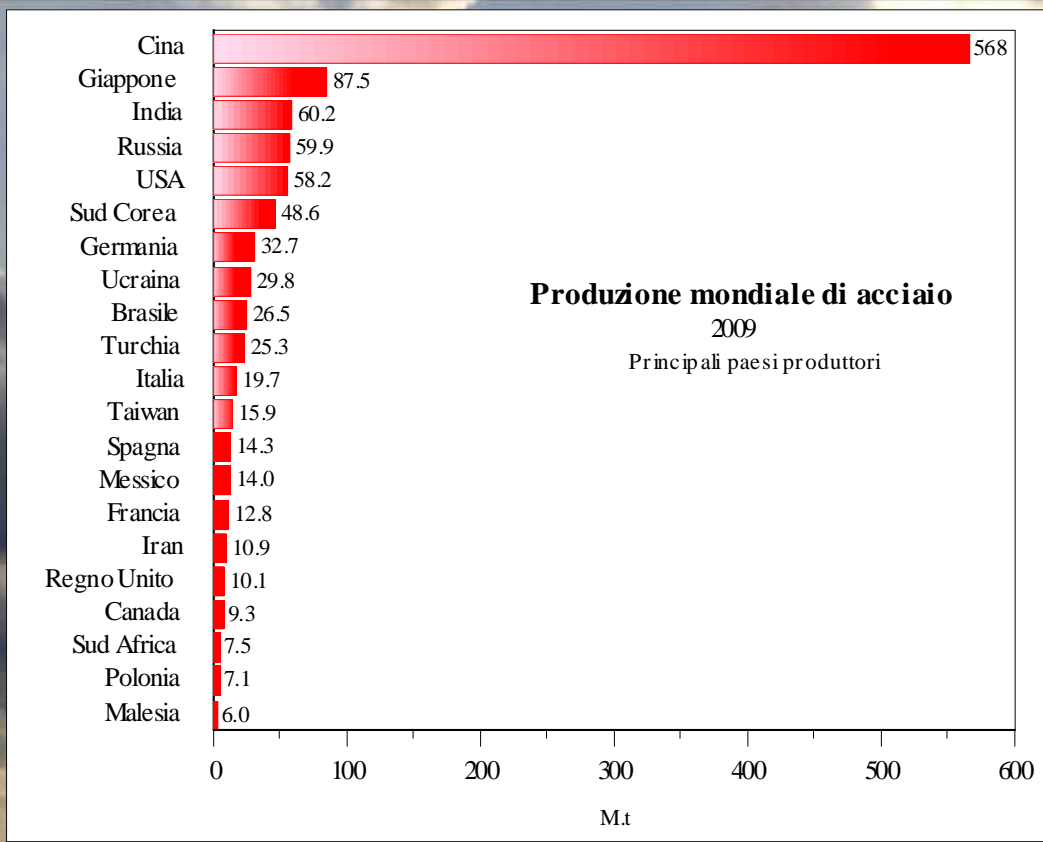
Milano  
marzo 2010

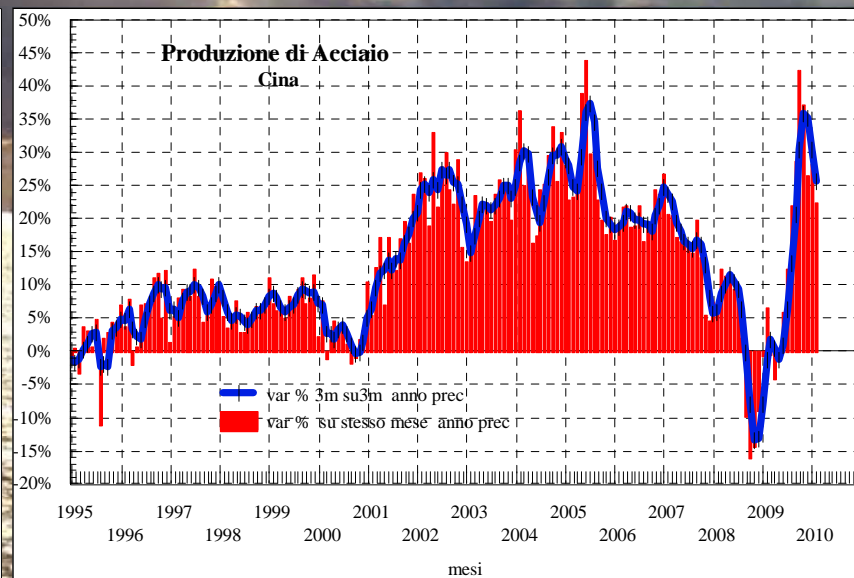
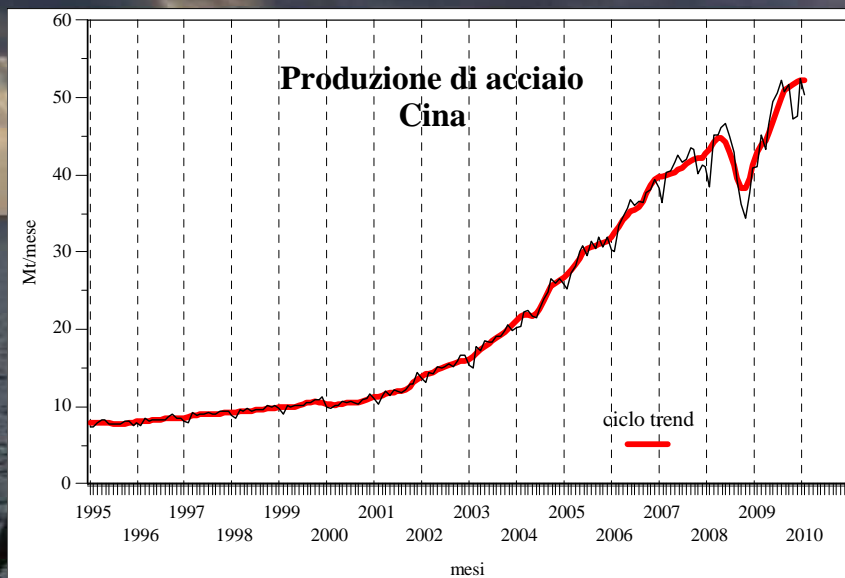
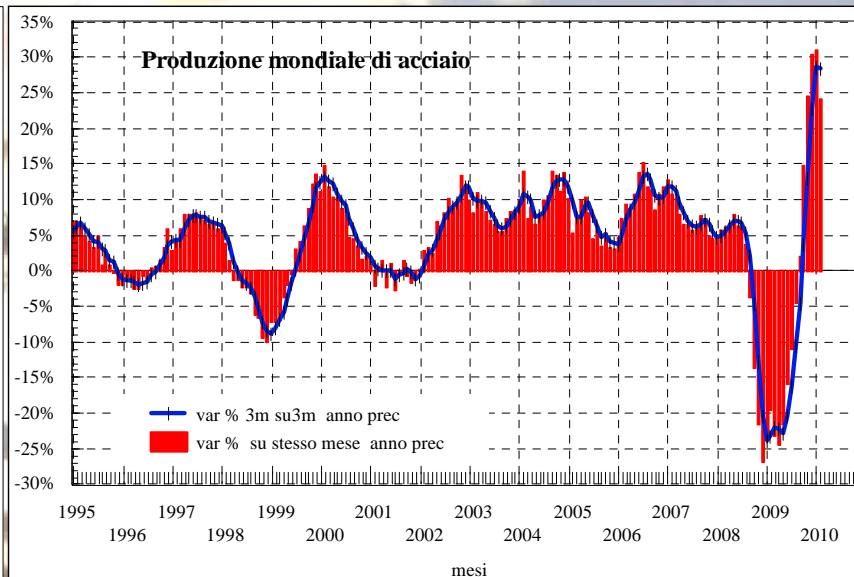
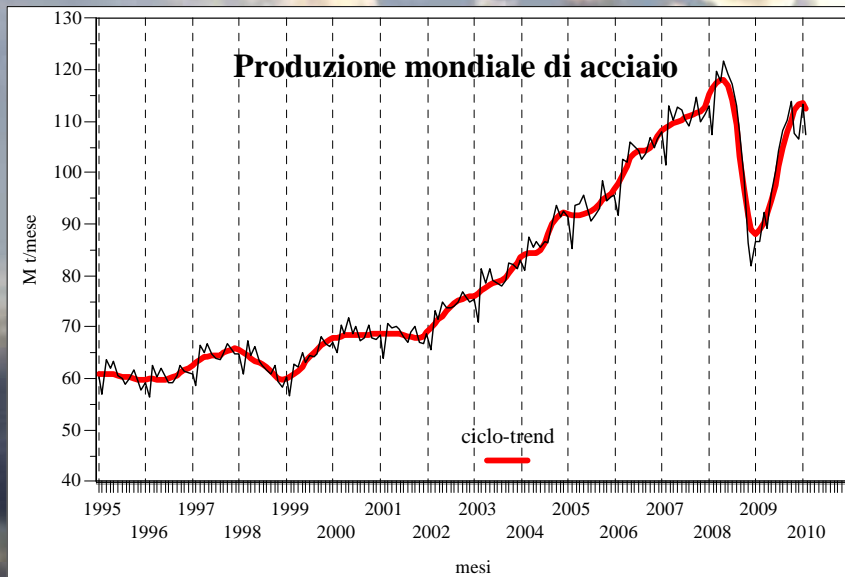


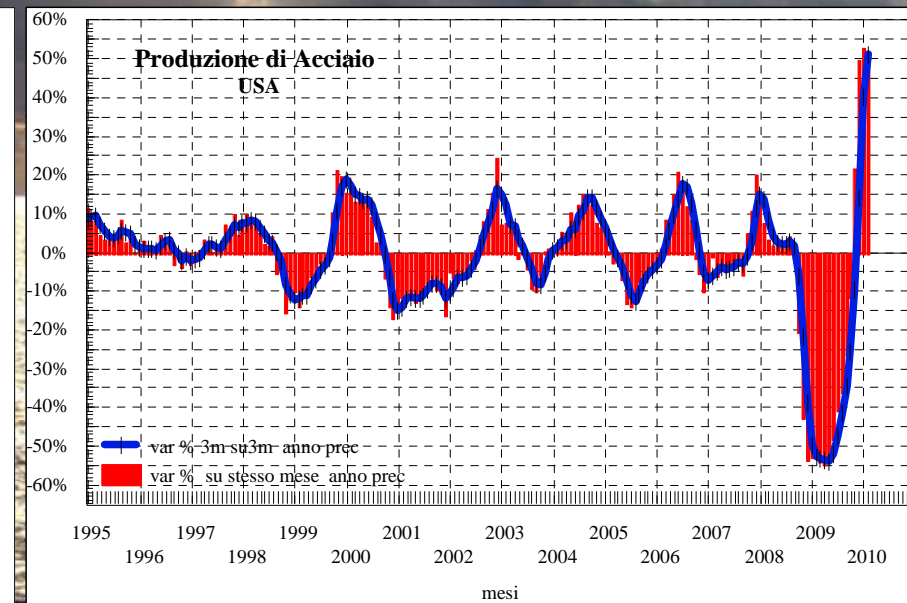
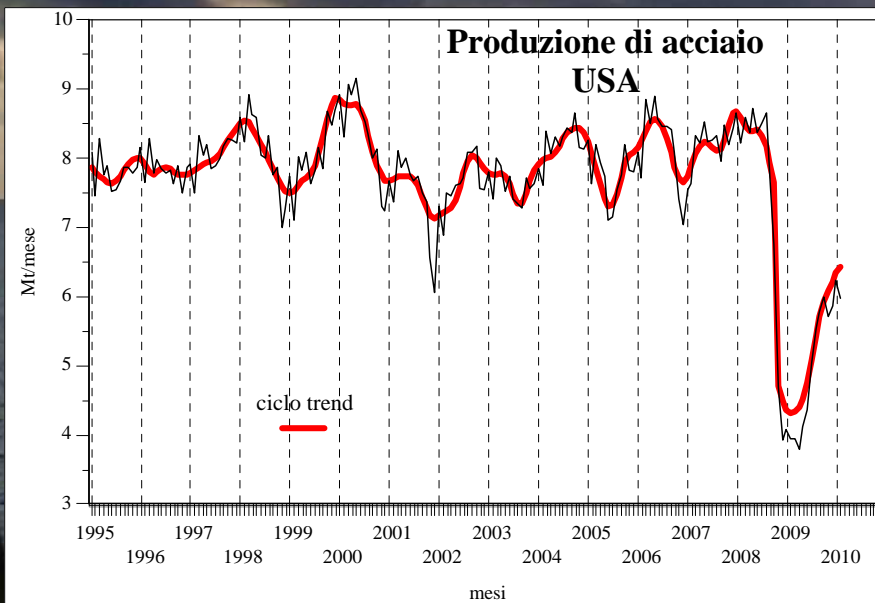
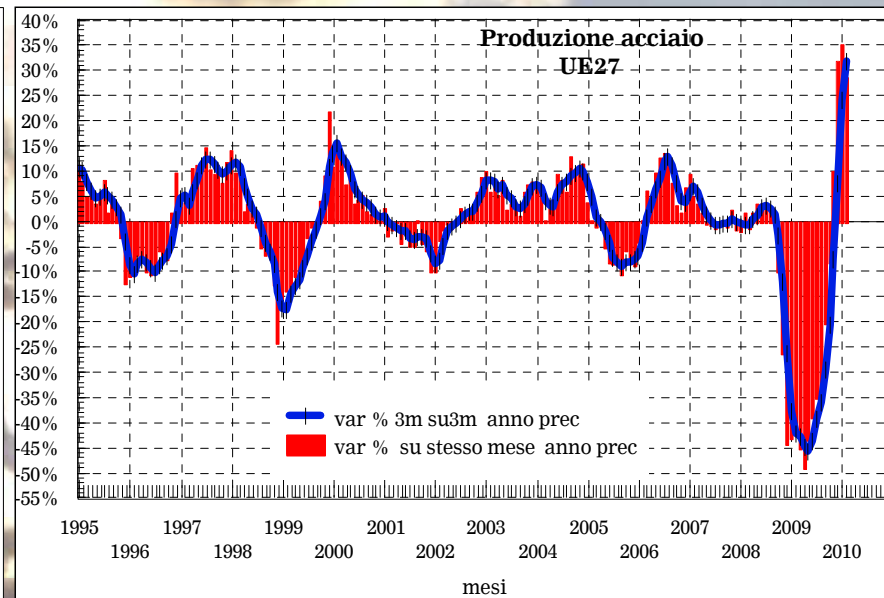
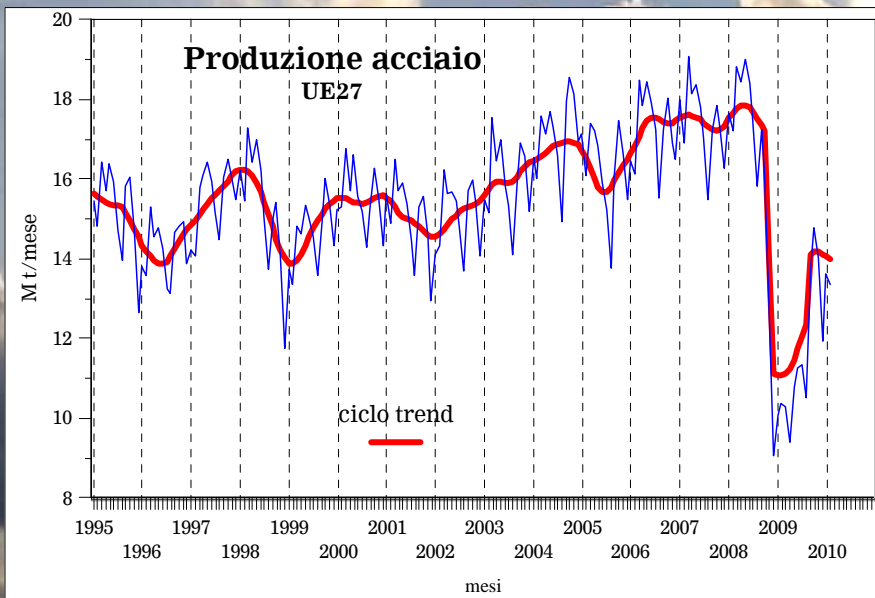
Federacciai











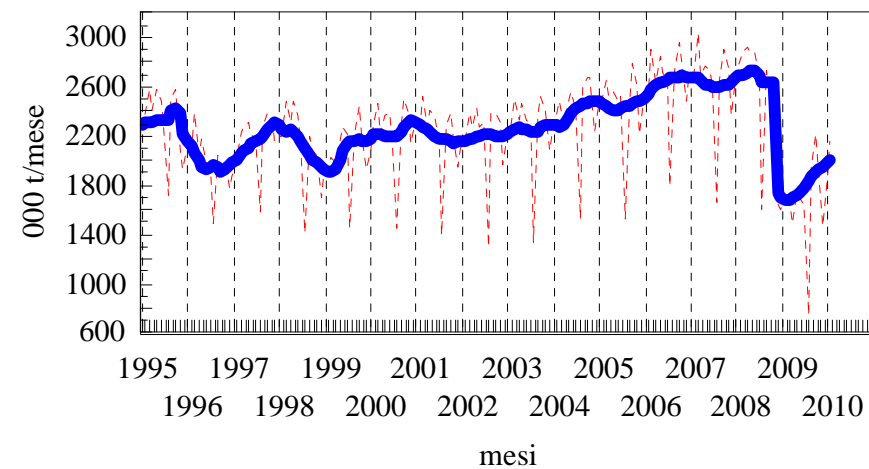
Italia



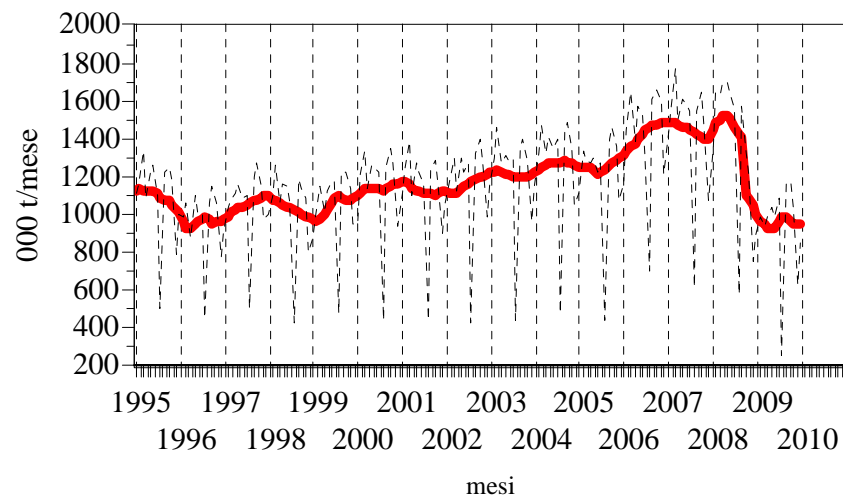
Federacciai

Italia

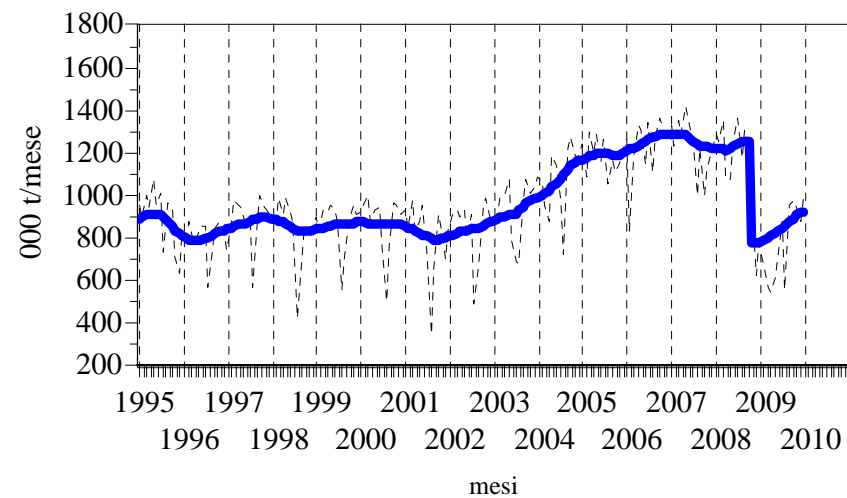
### Produzione di acciaio

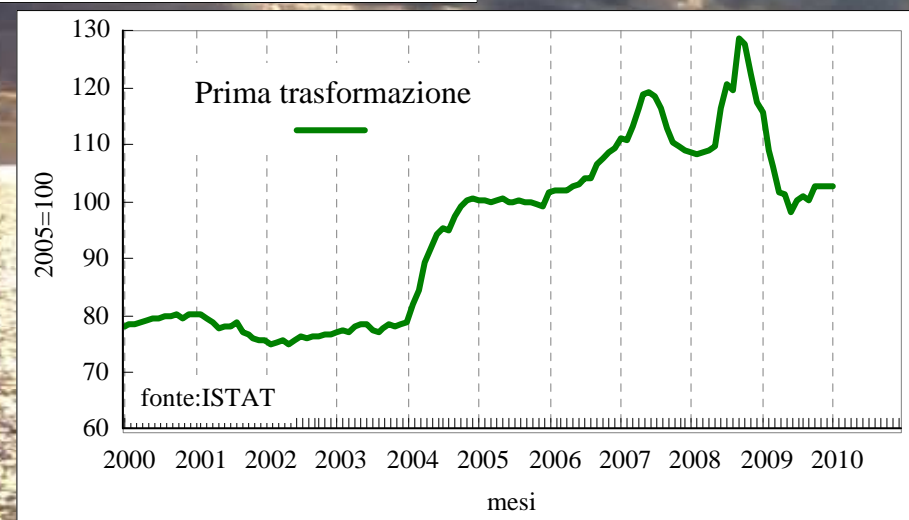
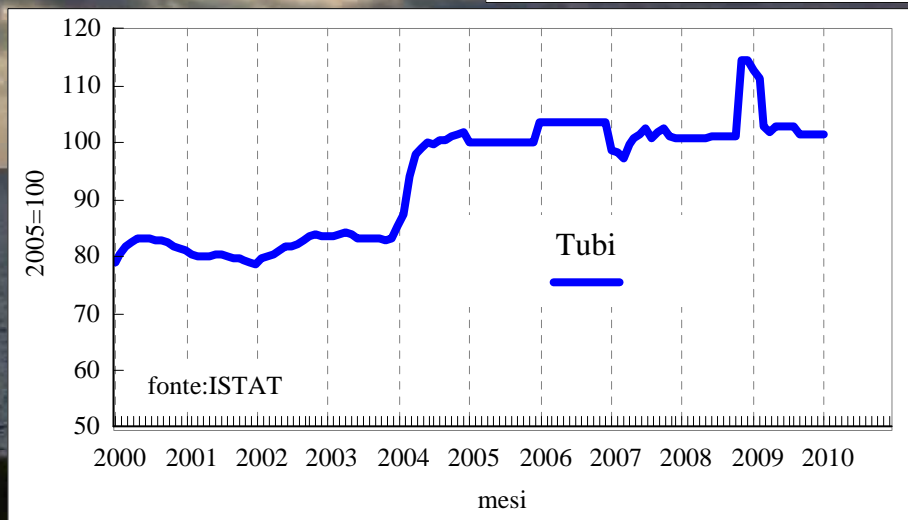


### Produzione di laminati lunghi



### Produzione di laminati piani

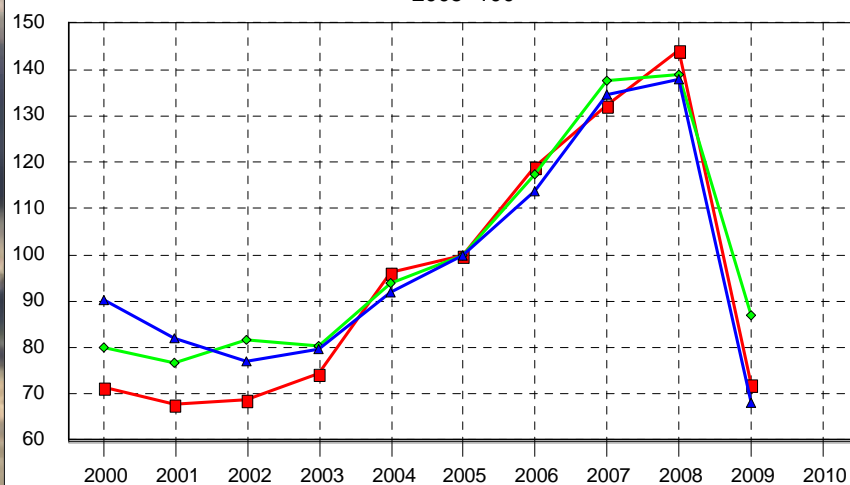




# Italia

## Indice del fatturato

2005=100

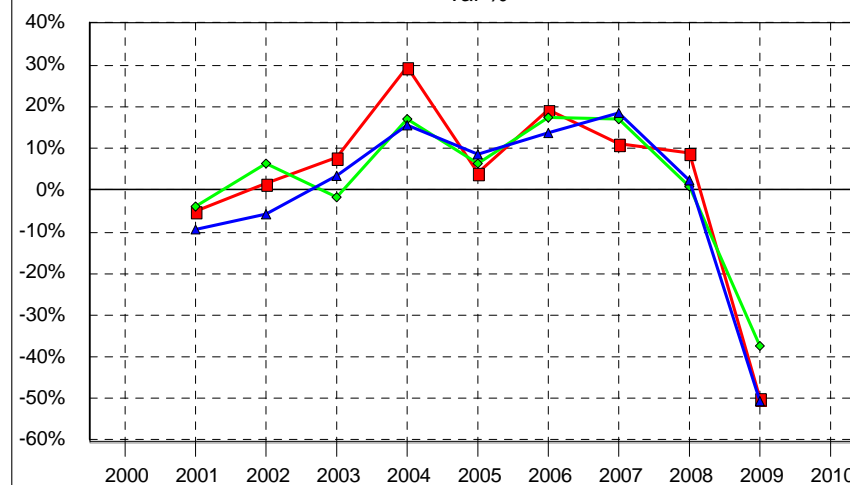


■ indice del fatturato totale/SIDERURGIA  
 ◆ indice del fatturato totale/ TUBI, CONDOTTI, PROFILATI CAVI E RELATIVI ACCESSORI IN ACCIAIO (ESCLUSI QUELLI IN ACCIAIO COLATO)  
 ▲ indice del fatturato totale/ ALTRI PRODOTTI DELLA PRIMA TRASFORMAZIONE DELL'ACCIAIO

fonte ISTAT

## Indice del fatturato

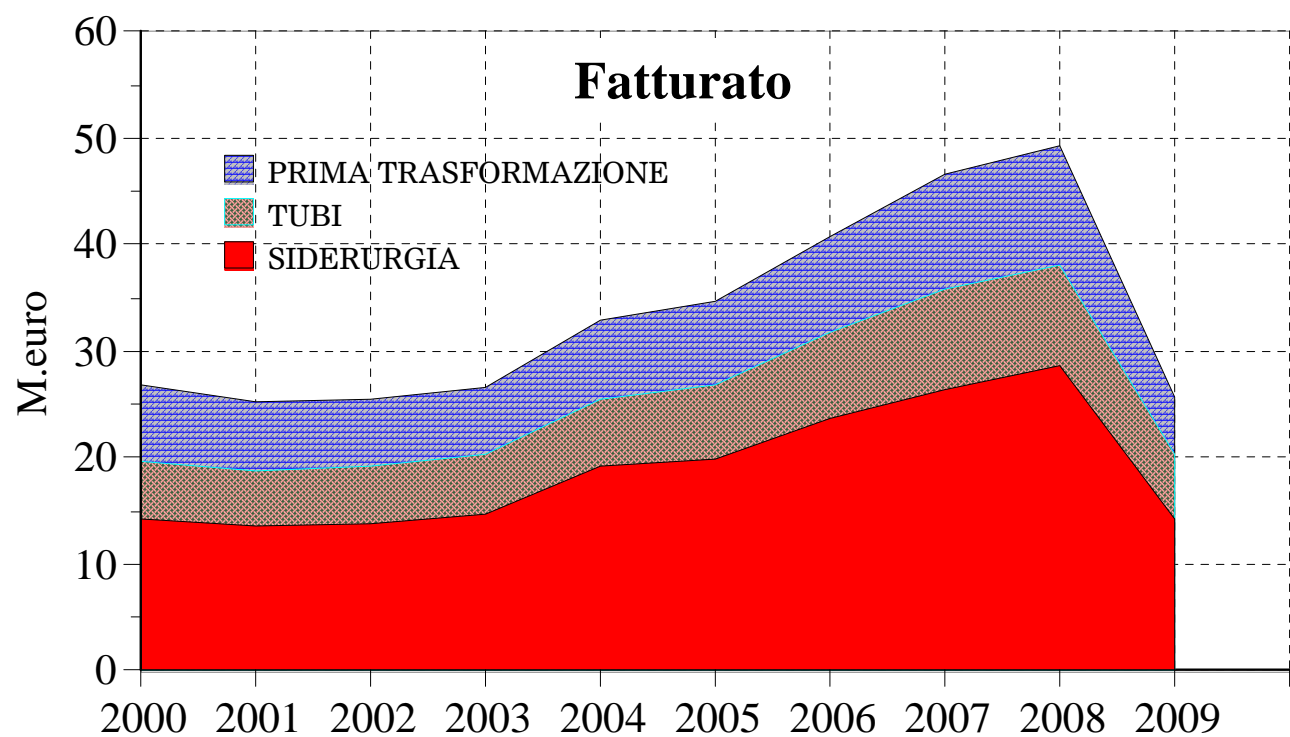
var %



■ indice del fatturato totale/SIDERURGIA  
 ◆ indice del fatturato totale/ TUBI, CONDOTTI, PROFILATI CAVI E RELATIVI ACCESSORI IN ACCIAIO (ESCLUSI QUELLI IN ACCIAIO COLATO)  
 ▲ indice del fatturato totale/ ALTRI PRODOTTI DELLA PRIMA TRASFORMAZIONE DELL'ACCIAIO

fonte ISTAT

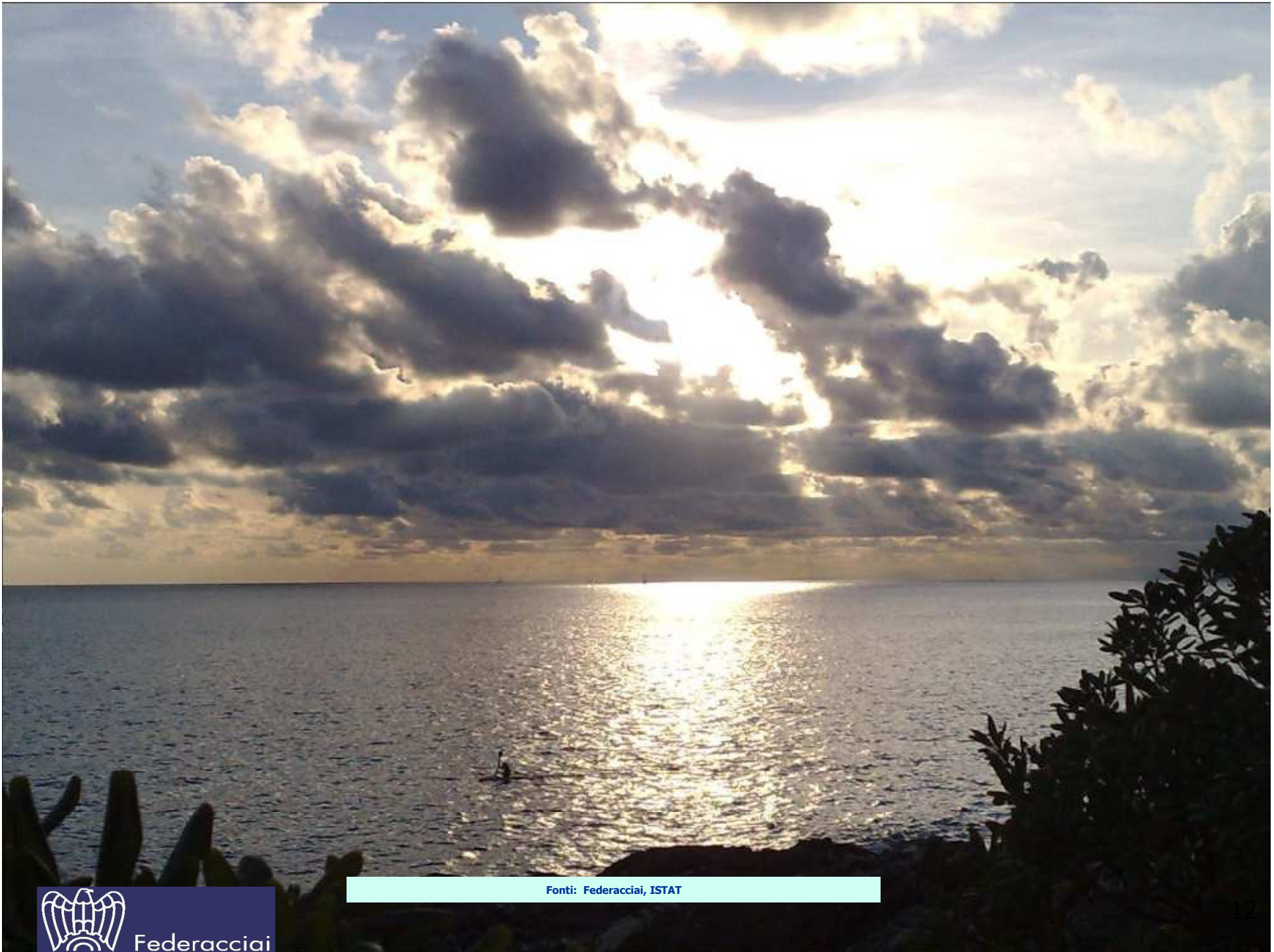
Italia



fonti: ISTAT 2005 Conti economici delle imprese 2005 altri anni elab. da indici del fatturato



Federacciai



Fonti: Federacciai, ISTAT



Federacciai